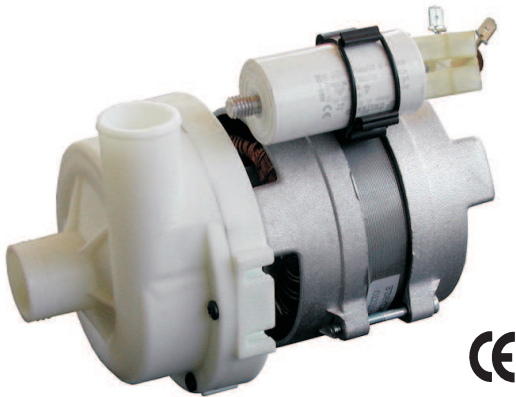




CRC - R

kW 0.20 Hm 8.5 max
Hp 0.15 L/1' 40 max

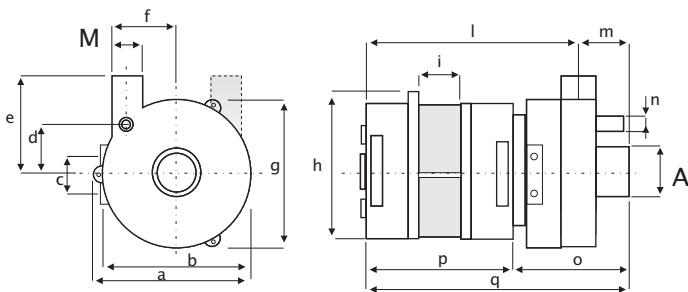


Corpo pompa
Pump Body
Pumpengehaus **POLYPROPYLENE**

Girante
Open Impeller
Offenes Laufrad **POLYPROPYLENE**

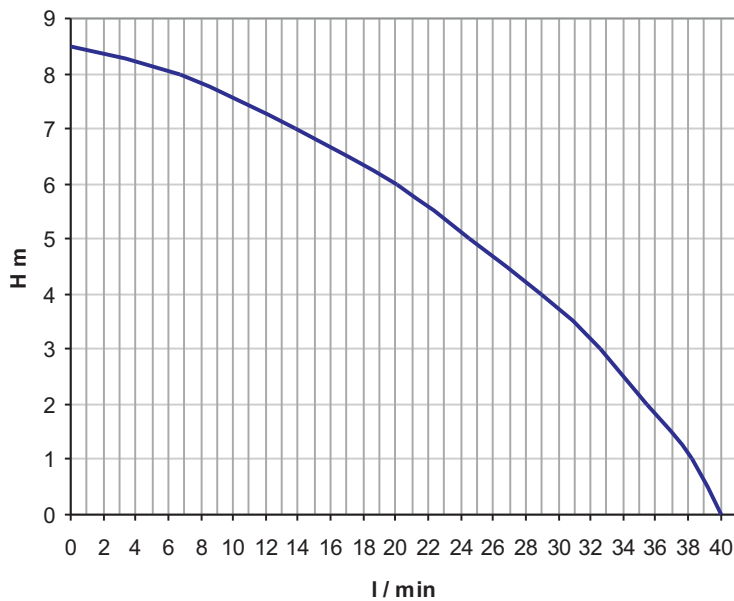
Albero motore
Motor Shaft
Motorwelle **AISI 416**

Tenuta meccanica.
Mechanical Seal
Gleitringdichtung **GRAFITE/CERAMICA**
CARBON/CERAMIC
KOHL/KERAMIK



SX	A1	M1	DX	A1	M1
	28	26		28	26

mod	a	b	c	d	e	f	g	h	k	l	m	n	o	p	kg
CRC-R	109	24,5	110	45	32	67	43	102	25	136	174	31	105	68	1,9



Potenza motore
Motor power
Motor Leistung **Hp 0,15 kW 0,2**

Tensione/Frequenza
Tension/Frequency
Spannung/Frequenz **1~V/Hz 230 / 50**

Corrente assorbita
Power consumption
Stromaufnahme **A 0,88**

GPM
RPM
UPM **2800**

Condensatore
Motor Power
Motor Leistung **4 µf**

Protezione termica
Thermal Overload
Überlastschutz **160°**

Classe isolamento
Insulation class
Isolations klasse **F**

Grado protezione
Protection class
Schutzklasse **IP 00**

Servizio
Duty
Betriebsart **S1 CONTINUO**
CONTINUOUS
DAUERBETRIEB

Hm	0	2	3	4	5	6	7	8	8,5
L / 1'	40	35,5	32,6	29	24,5	20,1	13,8	6,7	0

Ci riserviamo il diritto di apportare modifiche tecniche
We reserve the right of technical modifications
Technische Änderungen vorbehalten

REVISIONE N.00.05/10 P:08-057